



CSE : VOY

Focused on advancing its mineral properties within the Flin Flon-Snow Lake Greenstone Belt

Voyageur has assembled a portfolio of high-quality copper-gold-zinc deposits in world class geological terranes. The Company also holds a portfolio of royalties on several exploration properties and one PEA stage project.

Voyageur is excited to embark on this next phase in the Company's evolution, focused on highlighting the attractive mineral content of its land position, and advancing the gold potential within a number of its projects in the near term.

Share Price & Structure

Share Price ¹	\$0.335
Issued & Outstanding	27,270,032
Options	2,430,000
Warrants	5,736,198
Market Capitalization	\$9.1MM
Working Capital ¹	\$0.7MM

1. As at February 16, 2021

Significant Drill Intercepts at Select Properties

Property - Prospect	Type	DDH Name	Length (m)	Cu (pct)	Zn (pct)	Au (g/t)	Ag g/t
Big Island - Tara	Massive Sulphide	TZ-20-07	15.5	0.99	21.10	5.45	142.4
Albert's Lake - Main	Vein Gold	AL-11-57TW	27.9	-	-	3.46	9.1
Albert's Lake - South	Vein Gold	AL-20-302	5.5	0.01	-	4.37	14.6
Albert's Lake - Lion	Vein Gold	98-LW-16	3.3	-	-	38.5	49.8
Albert's Lake - Leo Lake	Massive Sulphide	AL-91-113	2.3	8.38	0.96	-	-
Mink Narrows - Copper Reef	Massive Sulphide	MN-08-46	10.2	3.66	0.28	0.50	-

Advisors

John D. Harvey
Robert D. Cudney
Edward Thompson

Board

Fraser Laschinger
Brent Peters
Stephen Masson
Ross Orr
William Phillips

Management

Brian Howlett – **CEO, Director**
Marina Katsimitsoulis- **CFO**
Stephen Masson – **VP Exploration**
Laara Shaffer – **Corporate Secretary**

Significant Shareholders

Northfield Capital Corporation
31.8%

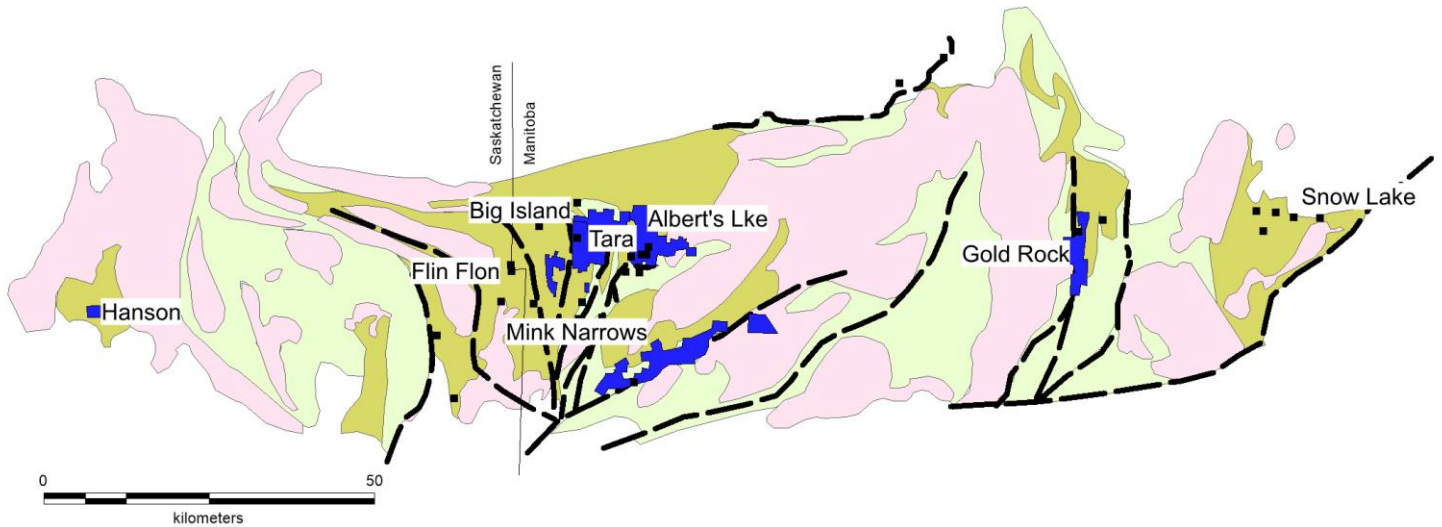
CONTACT US

+1-647-227-3035
investor@voyageurexplorers.com

VOYAGEUR MINERAL EXPLORERS CORP.

141 Adelaide St W, Suite 301
Toronto ON M5H 3L5

VOYAGEUR PROPERTY HOLDINGS IN THE FLIN FLON-SNOW LAKE BELT



The Flin Flon-Snow Lake greenstone belt is a world class mining district hosting 27 distinct Cu-Zn-Au deposits containing over 400 Mt of ore. Several advanced exploration projects are currently targeting both Cu-Zn-Au and gold-only mineralization.

Key Properties & Activity

Big Island (Tara Prospect)

- Massive Sulphide
- High grade Zn-Cu-Au mineralization hosted by volcanic rock sequence equivalent to the Flin Flon deposit
- Drill targeting is ongoing

Mink Narrows (Copper Reef Prospect)

- Cu-Zn-Au mineralization extending to over 200m depth from surface; volcanic sequence to east is under-explored
- Geophysical survey planned

Albert's Lake (Alberts Gold Zone)

- Several vein-gold prospects along a 2km structure; host rocks contain widespread pyrite mineralization
- Volcanic-hosted Cu-Zn-Au prospects also nearby
- Drill targeting is ongoing

Royalties

Property owner	Property	Project Stage	Royalty
Foran Mining Corp.	McIlvenna Bay	PFS	\$0.75/tonne ore
	Hanson Property	Exploration	2% NSR
	Bigstone	Exploration	2% NSR
	Balsam	Exploration	2% NSR
	Reed Property	Exploration	2% NSR + 6% NPI
Callinex Mines Inc.	Pine Bay Mine	Exploration	1% NSR
Rockcliff Metal Corp.	Morgan Woolsey Property	Exploration	2% NSR
	Cook Property	Exploration	1% NSR